



Buckthorn Court, Yate, Bristol

£255,000 Freehold

2 bedroom semi-detached house for sale

Description

** VIDEO VIEWING AVAILABLE **

Farringtons are pleased to welcome this immaculate two bedroom end terrace property on the new Peg Hill Estate, Buckthorn Court in Yate which will sure to attract a lot of interest!

A credit to the current vendors in making this a lovely home with its neutral decor and modern finishings to present the property nicely.

The ground floor presents a downstairs cloakroom, lounge and a kitchen / diner with integrated appliances.

The first floor boasts a modern bathroom with shower, one double bedroom with fitted wardrobe and a second double bedroom with a walk in wardrobe.

The rear of the property offers an enclosed rear garden with a patio area and a decking area to the top where you are able to enjoy that little peace of quiet!

Further benefits are: gas central heating, upvc double glazing, side access to the rear of the house and two allocated parking spaces.

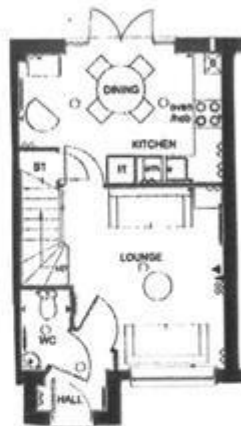
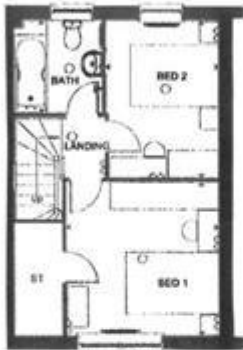
Close to local amenities with primary and secondary school close by. There is also a local community park which will appeal to smaller

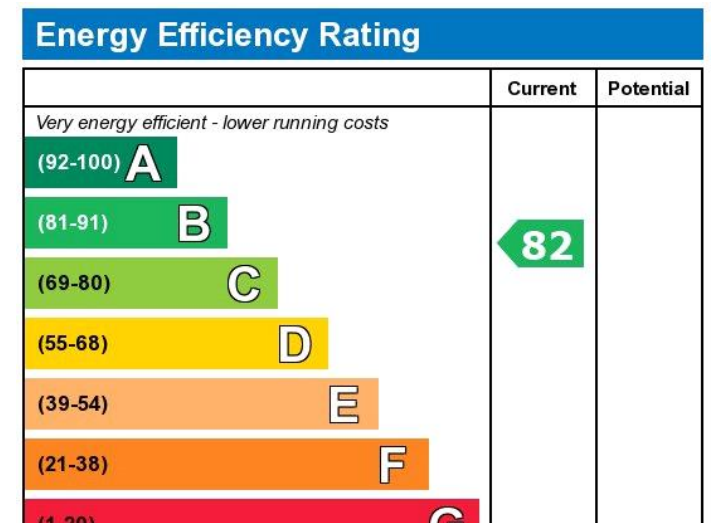


children.

Tenure

Freehold





Viewing by appointment only
 Farringtons Sales & Lettings - Head Office
 70 Rounceval Street, Chipping Sodbury, Bristol, Gloucestershire BS37 6AR
 Tel: 01454 326846 Email: gemma@mwfarringtons.co.uk Website:
<https://www.movewithfarringtons.co.uk/>

