



EDGEWORTH, YATE, BRISTOL

£290,000 Freehold

Beautiful, immaculate and great taste throughout!

This three bedroom terraced home is a welcome addition to the property market and the perfect family home.

- Immaculately Presented
- Heavily updated by current owner
- Three bedroom mid-terrace
- Popular location of Yate
- On the doorstep of a popular primary school
- Close to local amenities
- Open green space nearby
- Private Rear Garden

This stunning and heavily upgraded home has just become available to view, right on the doorstep of Wellesley Primary School with open green space to the front and amenities nearby this three bedroom terraced home is sure to be popular!

The downstairs is home to a high gloss kitchen/diner with integral appliances, and a stylish and chic lounge area with views over the open green space to the front.

The upstairs has three tastefully decorated bedrooms (two doubles and one single) and a beautifully designed bathroom complete with under sink storage and a modern tiled finish.

Outside, the property is blessed with an enclosed garden with patio space for outside dining and a well kept lawn area, the property further benefits from further outside space to the front of the house, single garage and useful driveway parking.

Call our office today to arrange your viewing before it's gone!

Council Tax Band: Council tax band B

Tenure: Freehold

Kitchen/diner

A high gloss, modern kitchen with some integral appliances and added dining space and views to the enclosed rear garden.

Entrance hall

A beautifully decorated entrance hall with some integral storage and understaffs cupboard space.

Lounge

Tastefully decorated and spacious living space, with views to the front of the property overlooking the open play space.

Bedroom 3

A neutral decor single bedroom with views to the front of the property.

Bedroom 1

A spacious double bedroom with tasteful decor and views to the front of the property.

Bedroom 2

A sizeable double bedroom with tasteful decor and views over the rear garden

Bathroom

a sleek and modern bathroom with over bath shower, under sink storage and a white contemporary suite with a modern tiled finish.

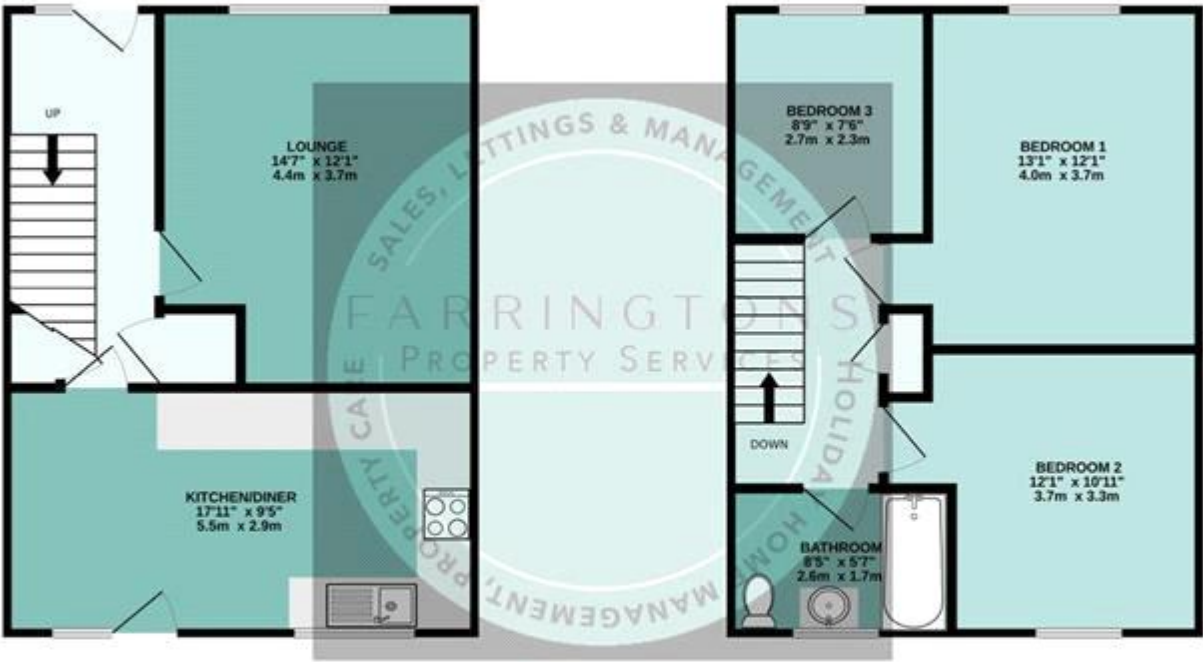


EDGEWORTH, YATE, BRISTOL

£290,000 Freehold

GROUND FLOOR
430 sq.ft. (39.9 sq.m.) approx.

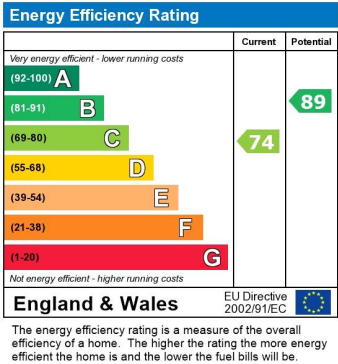
1ST FLOOR
430 sq.ft. (39.9 sq.m.) approx.



TOTAL FLOOR AREA: 859 sq ft. (79.8 sq.m.) approx.

Whilst every attempt has been made to ensure the accuracy of the floorplan contained here, measurements of doors, windows, rooms and any other items are approximate and no responsibility is taken for any error, omission or mis-statement. This plan is for illustrative purposes only and should be used as such by any prospective purchaser. The services, systems and appliances shown have not been tested and no guarantee as to their operability or efficiency can be given.

Made with Metropix ©2024



Whilst every effort is made to ensure the accuracy of these details, it should be noted that the measurements are approximate only. Floorplans are for representation purposes only and prepared according to the RICS Code of Measuring Practice by our floorplan provider. Therefore, the layout of doors, windows and rooms are approximate and should be regarded as such by any prospective purchaser. Any internal photographs are intended as a guide only and it should not be assumed that any of the furniture/fitings are included in any sale. Where shown, details of lease, ground rent and service charge are provided by the vendor and their accuracy cannot be guaranteed, as the information may not have been verified and further checks should be made either through your solicitor/conveyance. Where appliances, including central heating, are mentioned, it cannot be assumed that they are in working order, as they have not been tested. Please also note that wiring, plumbing and drains have not been checked.